

ORDINANCE 2009-08

AN ORDINANCE OF THE BOARD OF COMMISSIONERS OF LOWER ALLEN TOWNSHIP, CUMBERLAND COUNTY, PENNSYLVANIA, AMENDING THE OFFICIAL MAP OF LOWER ALLEN TOWNSHIP BY VACATING A PORTION OF A STREET KNOWN AS FLORENCE AVENUE, AS FOLLOWS:

BE IT ENACTED AND ORDAINED by the Board of Commissioners ("Board") of Lower Allen Township ("Township") Cumberland County, Pennsylvania, and it is hereby enacted and ordained by the same as follows:

WHEREAS, Petitioners, Select Capital Commercial Properties, Inc., Old Gettysburg Associates and Century Park Investments, LP, filed a petition pursuant to the First Class Township Code, 53 P.S. §57005; and

WHEREAS, Lower Allen Township, by appropriate Ordinance, may vacate a portion of Florence Avenue which is more particularly described in Exhibit "A"; and

WHEREAS, Petitioners own 100% of the abutting property of the subject portion of Florence Avenue in compliance with the First Class Township Code P.S. §57005; and

WHEREAS, the Board of Commissioners of Lower Allen Township, find it to be in the interest of Lower Allen Township to vacate this portion of Florence Avenue.

NOW THEREFORE BE IT ORDAINED, that all the above recitals are incorporated herein and the Board of Commissioners of the Township of Lower Allen, Cumberland County, Pennsylvania, by Motion duly made in affirmative vote of Commissioners present hereby vacate the portion of Florence Avenue, more fully described in Exhibit "A."

ENACTED AND ORDAINED this 27th day of April, 2009.

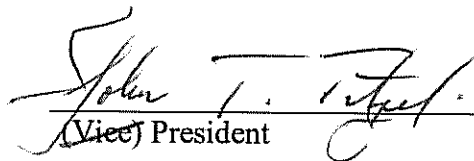
This vacation will be effective upon completion of a final report and upon filing with the Office of Clerk of the Court of Quarter Sessions in the Court of Common Pleas of Cumberland County.

ATTEST:
(Corporate Seal)

BOARD OF COMMISSIONERS
LOWER ALLEN TOWNSHIP



(Assistant) Secretary

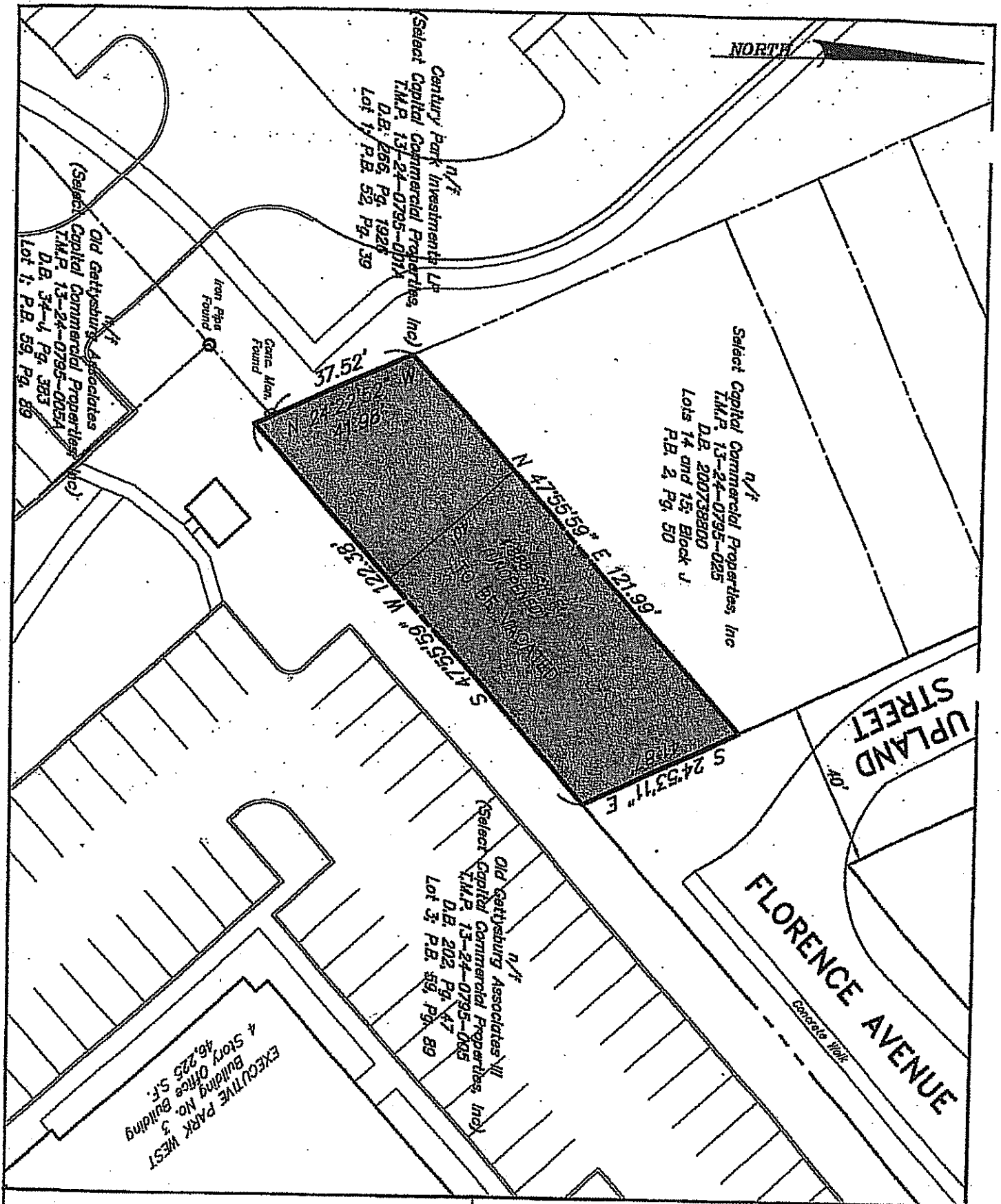


(Vice) President

EXHIBIT "A"

All that certain parcel of ground more specifically set forth as follows: Beginning at the intersection of lands now or formerly Century Park Investments LP and lands now or formerly of Select Capital Commercial Properties, Inc.; thence along the southerly boundary line of lands now or formerly of Select Capital Commercial Properties, Inc., North 47 degrees 55 minutes 59 seconds East, a distance of 121.99 feet to a point of intersection between the lands now or formerly of Select Capital Commercial Properties, Inc. and the westerly right of way line of Upland Street; thence along said right of way line of Upland Street and the westerly right of way line of Florence Avenue, South 24 degrees 53 minutes 11 seconds East, a distance of 41.87 feet to the point of intersection of the right of way line of Florence Avenue and lands now or formerly of Old Gettysburg Associates III; thence along the northerly boundary line of lands now or formerly of Old Gettysburg Associates III, South 47 degrees 55 minutes 59 seconds West, a distance of 122.38 feet to a point; thence continuing along lands now or formerly of Old Gettysburg Associates III, North 24 degrees 22 minutes 52 seconds West, a distance of 4.46 feet to a concrete monument at the intersection of lands now or formerly of Old Gettysburg Associates III and lands now or formerly of Century Park Investments LP; thence along lands now or formerly of Century Park Investments LP North 24 degrees 22 minutes 52 seconds West a distance of 37.52 feet, to the point and place of BEGINNING.

EXHIBIT "B"



VACATION PLAT
OF A PORTION OF
FLORENCE AVENUE

Lower Allan Township

Cumberland County, PA

RETTEW

RETTEW Associates, Inc.
2450 Oakdale St., Suite 100, Dover, PA 17011
Phone (717) 867-3321 • Fax (717) 867-3323

DRAWN BY: RBO

DATE: 12-12-08

SCALE: 1" = 30'

DWG. NO. 04-02746-002