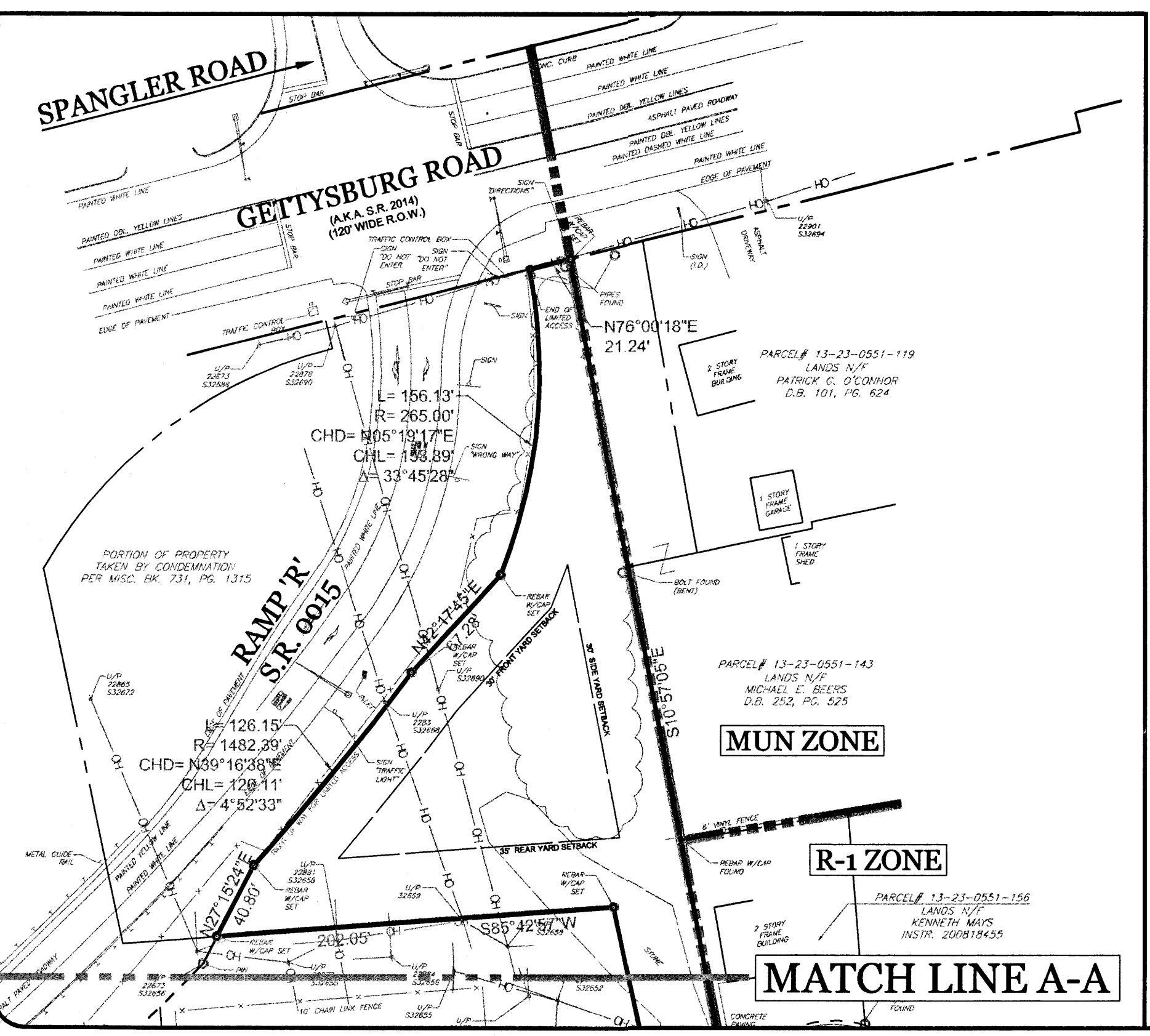


**SITE PLAN LEGEND**

- PROPERTY LINE (PL)
- PROPERTY LINE (ADJACERS)
- PROPERTY LINE (RIGHT OF WAY)
- BUILDING SETBACK LINE
- PARKING SETBACK LINE
- 100' RESIDENTIAL BUFFER LINE
- 200' RESIDENTIAL LOADING AREA BUFFER LINE
- 50' STREAM BUFFER LINE
- EDGE OF STREAM
- 100 YEAR FLOODPLAIN LINE
- FLOODWAY LINE
- WETLAND LINE
- WETLAND AREA
- WETLAND FLAG
- EXISTING TREELINE
- PROPOSED TREELINE
- EXISTING OVERHEAD UTILITY SERVICE
- EXISTING EASEMENT LINE
- PROPOSED EASEMENT LINE
- ZONE LINE

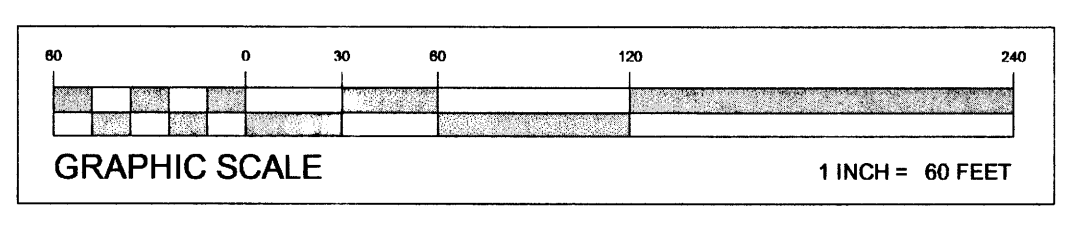


**PROTECT YOURSELF**  
A PHONE CALL  
CAN BE YOUR INSURANCE POLICY

**WHAT YOU DON'T KNOW CAN HURT YOU.**  
THE STATE OF PENNSYLVANIA REQUIRES NOTIFICATION OF EXCAVATING, DESIGNING, OR ANY PERSON PREPARING TO DISTURB THE EARTH'S SURFACE ANYWHERE IN THE STATE.

SERIAL No. 20093570344

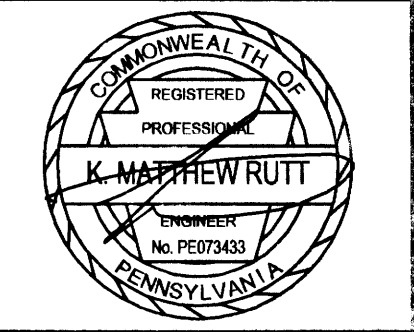
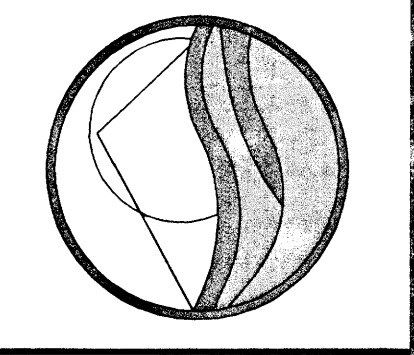
**ALERT TO CONTRACTOR:**  
ALL WM GENERAL CONTRACTOR WORK TO BE COMPLETED (EARTHWORK, FINAL UTILITIES, AND FINAL GRADING) BY THE MILESTONE DATE IN PROJECT DOCUMENTS.



REVISIONS	BY
REV 1-20111222 REVISED PER TOWNSHIP AND EAS COMMENTS	MAR

**LANDCORE**  
Engineering Consultants, P.C.

1000 BROADWAY  
SUITE 400  
PITTSBURGH, PA 15203  
PHONE: 412.233.8888



**K. MATTHEW RUTT, P.E.**  
PENNSYLVANIA LICENSE NO. 073433

PRELIMINARY LAND DEVELOPMENT PLANS  
**WAL-MART STORE No. 5888-00**  
HARTZDALE DRIVE and CAPITAL CITY MALL DRIVE  
LOWER ALLEN TOWNSHIP, CUMBERLAND COUNTY  
PENNSYLVANIA

**Walmart**  
WALMART REAL ESTATE BUSINESS TRUST  
2001 SE 10TH STREET  
BENTONVILLE, ARKANSAS 72716

DRAWN BY: B. NAGEGAST  
CHECKED BY: K. M. RUTT  
DATE: 2011.08.09  
SCALE: AS NOTED  
JOB No: 080032

**16**  
OVERALL SITE PLAN

E:\LANDCORE\PROJECTS\2008\080032 - WALMART - CAMP HILL\LANDCORE\DATE PLANS\16 - O.A. - 080032 - 16 - PLANSET - GENERAL